



new.
media™

New Media™
Plates & Modules



new
media™

Solutions for all Manner of Media Cabling Problems

New Media™ unique product codes

When ordering any New Media™ plates, please specify the required finish by following the simple code structure as demonstrated here.

MP	608	SC	BK
Plate Style	Product Number	Plate Finish	Insert Finish (if applicable)

Contents

New Media™ Plates	K5
Deco Plus® Unfurnished Plates	K9
Deco® Unfurnished Plates	K10
Define® Unfurnished Plates	K11
Definity™ Unfurnished Plates	K12
Mode® Unfurnished Plates	K13
Part M™ Unfurnished Plates	K13
Polar™ Unfurnished Plates	K13
Metal Clad Unfurnished Plates	K14
New Media™ Modules	K16
Typical Sky+ Installation	K24
Typical Sky+ HD Installation	K25
Technical Details	K26

The modern home is now more than a mere home. It doubles up occasionally as a cinema, concert hall, meeting venue and computer room etc.. Each of these functions brings with it its own unique requirements in terms of the provision of necessary services such as telephone or satellite sockets etc.

Even in recent memory designers and builders did not think beyond providing a perfunctory level of electrical switches, sockets and pendant light fittings in a new home. Nowadays, as well as providing an ever increasing number of these items, provision must be made for the myriad different electrical and electronic products which proliferate our homes.

Traditionally, products such as telephone and TV coaxial sockets etc. have all been supplied built into a standard size wall plate. The environment in today's office and home however requires a number of services to be provided to a specific work station

or convenient access point. The most flexible and efficient means of doing this is the use of modules on a multiple aperture plate.

The New Media™ range illustrated in the following pages encompasses a wide range of media and power modules, providing the designer and installer a host of solutions for all manner of media cabling problems.



New Media™ plates featured in the pages of this brochure are available in a variety of 10 distinctive quality finishes: antique brass*, polished brass, polished chrome, satin chrome*, satin brass*, black nickel, pearl nickel, brushed stainless* stainless steel and polar white. *UK Design Registration 3015621.

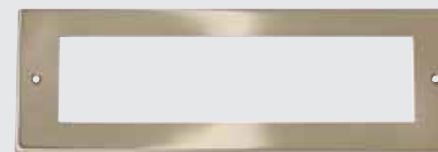


New Media™ Plates

The brief given to our designers charged with the task of developing the New Media™ range was to produce a comprehensive yet flexible and user friendly 'system' which enables the installer to easily create topical media and power cabling solutions.

All of the modules featured in this brochure are of the standard euro grid configuration based on 1 aperture modules of 25 x 50mm. Mounting plates are available as wall or floor plates and can accommodate 1 – 16 modules according to requirements.

Instead of numerous unsightly individual sockets, a single New Media™ plate can be used at a convenient point to bring together any combination of media modules. The individual modules are available in black or white finish and are suitable for mounting on blank plates from selected accessory ranges, namely the Polar™ and Mode® moulded accessory ranges, the Click® metal clad range plus the Deco Plus®, Deco®, Define® and Definity™ decorative metal ranges.



MP508



MP608



The furnished plates illustrated above contain 6 x 1 aperture and 1 x 2 aperture media modules (left) and 4 x 2 aperture 13A socket outlet modules (right).

Small Unfurnished Front Plates - 8 Apertures

- MP508AB** Small New Media™ Unfurnished Front Plate - 8 Apertures - Antique Brass
- MP508BR** Small New Media™ Unfurnished Front Plate - 8 Apertures - Polished Brass
- MP508PN** Small New Media™ Unfurnished Front Plate - 8 Apertures - Pearl Nickel
- MP508SB** Small New Media™ Unfurnished Front Plate - 8 Apertures - Satin Brass

Requires MP520 flush back box and MP510 Yoke. K8.

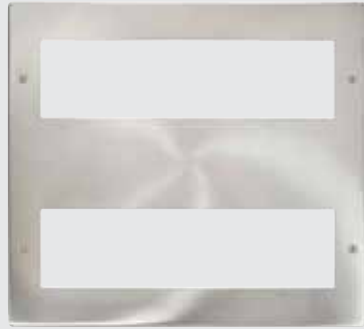
Small New Media™ Unfurnished Front Plate & Yoke - 8 Apertures

- CMA608** Small New Media™ Unfurnished Front Plate & Yoke - 8 Apertures - White
- MP608**** Small New Media™ Unfurnished Front Plate & Yoke - 8 Apertures

**Finishes available BN, CH, SC, SS, PW

Standards: BS 5733
 Back Box Depth: 47mm
 Dimensions: 250mm (W) x 87mm (H) x 8mm (D) CMA608: 248mm (W) x 86mm (H) x 9.5mm (D)

Understanding the code:
 MP - Plate Style 508 - Product No. BN - Plate Finish. AB Antique Brass, BR Polished Brass, SB Satin Brass, CH Polished Chrome, SC Satin Chrome, BN Black Nickel, PN Pearl Nickel, BS Brushed Stainless, SS Stainless Steel, PW Polar White



MP516



The furnished plate illustrated above contains 8 single New Media™ modules (top row) and 4 twin width socket outlet modules (bottom row).

MP516 - The yoke 'MP510' (x2) is required to mount the media modules into prior to assembling the frontplate, see page K8.

Back box MP525 or MP535 is required, see page K8.



MP616

Large Unfurnished Front Plates - 2 x 8 Apertures

- MP516AB** Large New Media™ Unfurnished Front Plate - 2 x 8 Apertures - Antique Brass
- MP516BN** Large New Media™ Unfurnished Front Plate - 2 x 8 Apertures - Black Nickel
- MP516BR** Large New Media™ Unfurnished Front Plate - 2 x 8 Apertures - Polished Brass
- MP516BS** Large New Media™ Unfurnished Front Plate - 2 x 8 Apertures - Brushed Stainless
- MP516CH** Large New Media™ Unfurnished Front Plate - 2 x 8 Apertures - Polished Chrome
- MP516PN** Large New Media™ Unfurnished Front Plate - 2 x 8 Apertures - Pearl Nickel
- MP516SS** Large New Media™ Unfurnished Front Plate - 2 x 8 Apertures - Stainless Steel

Large New Media™ Unfurnished Front Plate & Yoke - 2 x 8 Apertures

- CMA616** Large New Media™ Unfurnished Front Plate & Yokes - 2 x 8 Apertures - White
- MP616**** Large New Media™ Unfurnished Front Plate & Yoke - 2 x 8 Apertures

**Finishes available: BS, PW, SB, SC

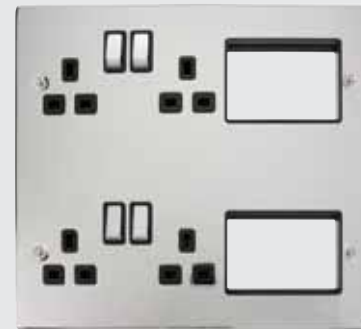
Standards: BS 5733

Back Box Depth: 35mm Minimum

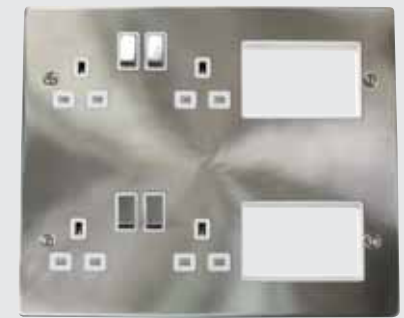
Dimensions: 250mm (W) x 216mm (H) x 8mm (D) 616: 248mm (W) x 214mm (H) x 9.5mm (D)

Understanding the code:

MP - Plate Style 508 - Product No. BN - Plate Finish. AB Antique Brass, BR Polished Brass, SB Satin Brass, CH Polished Chrome, SC Satin Chrome, BN Black Nickel, PN Pearl Nickel, BS Brushed Stainless, SS Stainless Steel, PW Polar White



MP606CHBK



MP606SCWH



MP603SCBK



MP603CHWH

Available in Chrome (CH), Satin Chrome (SC) and Polar White (PW).

Product is supplied with 4 x 13A DP switched sockets. Back box MP525 or MP535 required, see following page.

2 Tier Semi-Modular Unfurnished Plates

- MP606PW** Large New Media™ Part Furnished Front Plate - 4 x 13A DP Switched Sockets & 2 x 3 Apertures
- MP606CHBK** Large New Media™ Part Furnished Front Plate - 4 x 13A DP Switched Sockets & 2 x 3 Apertures
- MP606CHWH** Large New Media™ Part Furnished Front Plate - 4 x 13A DP Switched Sockets & 2 x 3 Apertures
- MP606SCBK** Large New Media™ Part Furnished Front Plate - 4 x 13A DP Switched Sockets & 2 x 3 Apertures
- MP606SCWH** Large New Media™ Part Furnished Front Plate - 4 x 13A DP Switched Sockets & 2 x 3 Apertures

Half New Media Semi-Modular Part Furnished Plate

- MP603CHWH** Half New Media Part Furnished Front Plate - 2 X 13A DP Switched Sockets & 3 Apertures
- MP603PW** Half New Media Part Furnished Front Plate - 2 X 13A DP Switched Sockets & 3 Apertures
- MP603SCWH** Half New Media Part Furnished Front Plate - 2 X 13A DP Switched Sockets & 3 Apertures
- MP603CHBK** Half New Media Part Furnished Front Plate - 2 X 13A DP Switched Sockets & 3 Apertures
- MP603SBBK** Half New Media Part Furnished Front Plate - 2 X 13A DP Switched Sockets & 3 Apertures
- MP603SCBK** Half New Media Part Furnished Front Plate - 2 X 13A DP Switched Sockets & 3 Apertures

Standards: BS 1363-2

Back Box Depth: 603: 47mm (MP520) 606: 35mm (MP535) Or 47mm (MP525) Cable Sizes: 3 x 2.5mm² or 2 x 4mm²

Dimensions: 603: 250mm (W) x 86mm (H) x 8mm (D) 606: 250mm (W) x 216mm (H) x 8mm (D)

Understanding the code:

MP - Plate Style 508 - Product No. BN - Plate Finish. BK - Insert Finish. SB Satin Brass, CH Polished Chrome, SC Satin Chrome, PW Polar White



MP510



MP520



MP525



DPCH310



DPSB311



DPBN312



Yoke

MP510 New Media™ Yoke - 8 Apertures

Divider Plates

MP521 Divider Plate 47mm Deep for MP520 (76mm x 44mm)

MP526 Divider Plate 47mm Deep for MP525 (93mm x 44mm)

MP536 Divider Plate 35mm Deep for MP535

Back Boxes

MP520 47mm Deep New Media™ Back Box - 8 Apertures

MP525 47mm Deep New Media™ Back Box With Central Divider - 2 x 8 Apertures

MP535 35mm Deep New Media™ Back Box With Central Divider - 2 x 8 Apertures

Galvanised steel back boxes supplied for flush mounting of Media Plates. Mounting yoke facilitates pre-assembly of required modules. Fitted with twin earth terminals. Divider plates can be installed as necessary in order to screen sensitive modules.

Standards: 510 520: BS 5733

Cutout: 520: 225mm (W) x 75mm (H) 525 535: 225mm (W) x 194mm (H)

Dimensions: 510: 238mm (W) x 75mm (H) x 13mm (D)

521: 76mm (W) x 44mm (H) x 1mm (D)

526: 93mm (W) x 44mm (H) x 1mm (D)

536: 93mm (W) x 34mm (H) x 1mm (D)

520: 225mm (W) x 75mm (H) x 47mm (D)

525: 225mm (W) x 194mm (H) x 47mm (D)

535: 225mm (W) x 194mm (H) x 35mm (D)

Unfurnished Plates - New Media™

DP310** 1 Gang New Media™ Unfurnished Plate - 1 Aperture

DP311** 1 Gang New Media™ Unfurnished Plate - 2 Apertures

DP312** 2 Gang New Media™ Unfurnished Plate - 4 Apertures

Please add 2 letter prefix to identify required finish i.e. DPCH311 for polished chrome.

Standards: BS 5733

Back Box Depth: Dependent On Modules Fitted

Dimensions: 1 Gang: 88mm (W) x 88mm (H) x 8mm (D) 2 Gang: 146mm (W) x 88mm (H) x 8mm (D)

Understanding the code:

DP - Plate Style **BN** - Plate Finish **311** - Product No.

AB Antique Brass, BR Polished Brass, SB Satin Brass, CH Polished Chrome, SC Satin Chrome, BN Black Nickel, SS Stainless Steel.



VPAB310



VPBN311



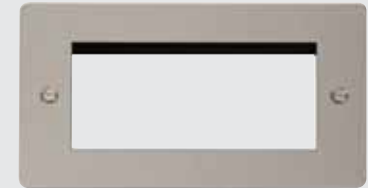
VPCH312



FPBS310



FPCH311



FPPN312



Unfurnished Plates - New Media™

- VP**310** 1 Gang New Media™ Unfurnished Plate - 1 Aperture
- VP**311** 1 Gang New Media™ Unfurnished Plate - 2 Apertures
- VP**312** 2 Gang New Media™ Unfurnished Plate - 4 Apertures

Please add 2 letter prefix to identify required finish i.e. VPCH311 for Polished Chrome.
VP**310 excludes GGBR finish

Standards: BS 5733

Back Box Depth: Dependent On Modules Fitted

Dimensions: 1 Gang: 88mm (W) x 88mm (H) x 8mm (D) 2 Gang: 146mm (W) x 88mm (H) x 8mm (D)

Understanding the code:

VP - Plate Style **BN** - Plate Finish **311** - Product No. **BK** - Insert Colour. Please note: AB & BN are only available with black inserts.
AB Antique Brass, BR Polished Brass, SB Satin Brass, CH Polished Chrome, SC Satin Chrome,
BN Black Nickel, SS Stainless Steel, PN Pearl Nickel.



Unfurnished Plates - New Media™

- FP**310** 1 Gang New Media™ Unfurnished Plate - 1 Aperture
- FP**311** 1 Gang New Media™ Unfurnished Plate - 2 Apertures
- FP**312** 2 Gang New Media™ Unfurnished Plate - 4 Apertures

Please add 2 letter prefix to identify required finish i.e. FPCH311 for polished chrome.

Standards: BS 5733

Back Box Depth: Dependent On Modules Fitted

Dimensions: 1 Gang: 86mm (W) x 86mm (H) x 1.3mm (D) 2 Gang: 146mm (W) x 88mm (H) x 1.3mm (D)

Understanding the code:

FP - Plate Style **BN** - Plate Finish **311** - Product No. **BK** - Insert Colour.
BS Brushed Stainless, BN Black Nickel, PN Pearl Nickel, CH Polished Chrome and SS Stainless Steel



SIN310BK

SIN311BK

SIN312BK



SCP310CH

SCP311SS

SCP312BS

definity™

New Media™ Unfurnished Plate Inserts

- SIN310BK** 1 Gang New Media™ Unfurnished Plate Insert - 1 Aperture
- SIN311BK** 1 Gang New Media™ Unfurnished Plate Insert - 2 Apertures
- SIN312BK** 2 Gang New Media™ Unfurnished Plate Insert - 4 Apertures

New Media™ Cover Plates

- SCP310** 1 Gang New Media™ Cover Plate - 1 Aperture
- SCP311** 1 Gang New Media™ Cover Plate - 2 Apertures
- SCP312** 2 Gang New Media™ Cover Plate - 4 Apertures

Standards: Inserts: BS 5733

Back Box Depth: Dependent On Modules Fitted

Dimensions: 1 Gang: 86mm (W) x 86mm (H) x 4mm (D) 2 Gang: 146mm (W) x 86mm (H) x 4mm (D)

Understanding the code:

SIN - Insert Prefix **311** - Product No **BK** - Insert Colour **SS** - 'INGOT' Switch Finish (if applicable).

SCP - Definity™ Cover Plate Prefix **311** - Product No **SS** - Plate Colour. Definity™ plates are coated stainless steel

CH Chrome, SS Stainless Steel, BS Brushed Stainless, PW Polar White, BK Black, MW Metal White, RD Red



CMA310

CMA311AG

PRW312



MODE®

Part M Range™

polar™

Mode® Unfurnished Plates - New Media™

- CMA310** 1 Gang New Media™ Unfurnished Plate - 1 Aperture
- CMA311** 1 Gang New Media™ Unfurnished Plate - 2 Apertures
- CMA312** 2 Gang New Media™ Unfurnished Plate - 4 Apertures

Part M™ Range Unfurnished Plates - New Media™

- CMA310AG** 1 Gang New Media™ Unfurnished Plate - 1 Aperture
- CMA311AG** 1 Gang New Media™ Unfurnished Plate - 2 Apertures
- CMA312AG** 2 Gang New Media™ Unfurnished Plate - 4 Apertures

Polar™ Unfurnished Plates - New Media™

- PRW310** 1 Gang New Media™ Unfurnished Plate - 1 Aperture
- PRW311** 1 Gang New Media™ Unfurnished Plate - 2 Apertures
- PRW312** 2 Gang New Media™ Unfurnished Plate - 4 Apertures

Standards: BS 5733

Back Box Depth: Dependent On Modules Fitted

Dimensions: Mode® & Part M™: 1 Gang: 86mm (W) x 86mm (H) x 9.5mm (D) 2 Gang: 146mm (W) x 86mm (H) x 9.5mm (D)

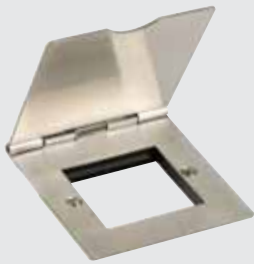
Polar™: 1 Gang: 86mm (W) x 86mm (H) x 11mm (D) 2 Gang: (146mm x 86mm x 11mm)



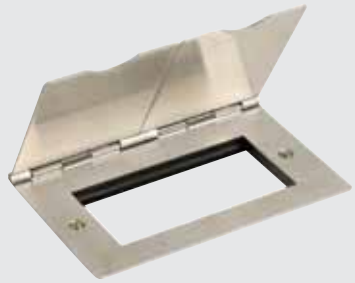
CL311



CL312



FS311SS



FS312SS

essentials™

Unfurnished Plates - New Media™

- CL311** 1 Gang New Media™ Unfurnished Plate - 2 Apertures
- CL312** 2 Gang New Media™ Unfurnished Plate - 4 Apertures
Plates Complete With 40mm Deep Back Box
For more Back Boxes see page M4

Unfurnished Floor Plates - For Use With New Media™ Modules

- FS311SS** 1 Gang New Media™ Unfurnished Floor Plate - 2 Apertures
- FS312SS** 2 Gang New Media™ Unfurnished Floor Plate - 4 Apertures

Standards: BS 5733 **Back Box Depth:** Dependent On Modules Fitted
Dimensions: CL311: 80mm (W) x 80mm (H) x 42mm (D) CL312: 140mm (W) x 80mm (H) x 42mm (D)
 FS311SS: 86mm (W) x 93mm (D) x 5mm (H) FS312SS: 146mm (W) x 93mm (D) x 5mm (H)

New Media™ Modules

The New Media™ modules offer a flexible build solution to a host of individual media transfer requirements. The clip fit grid modules are simple to install in their blank mounting plates.





TV/Satellite Modules - Single Width (25mm x 50mm)

- MM405BK** Single Female Satellite Module - Black
- MM405WH** Single Female Satellite Module - White
- MM405GY** Single Female Satellite Module - Grey

- MM406BK** Twin Female Satellite Module (F to F Connection) - Black
- MM406WH** Twin Female Satellite Module (F to F Connection) - White
- MM406GY** Twin Female Satellite Module (F to F Connection) - Grey

- MM410BK** Single Female Coaxial Module - Black
- MM410WH** Single Female Coaxial Module - White
- MM410GY** Single Female Coaxial Module - Grey

- MM415BK** Single Male Coaxial Module - Black
- MM415WH** Single Male Coaxial Module - White
- MM415GY** Single Male Coaxial Module - Grey

- MM450BK** Blank Module - Black
- MM450WH** Blank Module - White
- MM450GY** Blank Module - Grey

Standards: 450: BS 5733
Dimensions: 405: 25mm (W) x 50mm (H) x 23mm (D) 406: 25mm (W) x 50mm (H) x 15mm (D)
 410 415: 25mm (W) x 50mm (H) x 23.4mm (D) 450: 25mm (W) x 50mm (H) x 14mm (D)



All diplexed, triplexed and quad modules require installation of a signal combining distribution amplifier.
 Not suitable for use in the Republic of Ireland.
 The range of diplexed, triplexed and quad modules are not compatible with 'Sky Q'.

Media Modules - Twin Width (50mm x 50mm)

- MM420BK** Diplexed TV And Radio Module - Black
- MM420WH** Diplexed TV And Radio Module - White
- MM420GY** Diplexed TV And Radio Module - Grey

- MM430BK** Triplexed TV, Radio & Satellite Module - Black
- MM430WH** Triplexed TV, Radio & Satellite Module - White
- MM430GY** Triplexed TV, Radio & Satellite Module - Grey

- MM440BK** Quad TV, Radio, Sat 1 & Sat 2 Module - Black
- MM440WH** Quad TV, Radio, Sat 1 & Sat 2 Module - White
- MM440GY** Quad TV, Radio, Sat 1 & Sat 2 Module - Grey

TV/Satellite Modules - Twin Width (50mm x 50mm)

- MM425BK** Diplexed TV And Satellite Module - Black
- MM425WH** Diplexed TV And Satellite Module - White
- MM425GY** Diplexed TV And Satellite Module - Grey

Module	Number of Inputs	Number of outputs	Signals on input 1	Signals on input 2
MM420	1	2	TV, Radio	
MM425	1	2	TV, Sat 1	
MM430	1	3	TV, Sat 1, Radio	
MM440	2	4	TV, Sat 1, Radio	Sat 2

Dimensions: 50mm (W) x 50mm (H) x 31.3mm (D)



MM460BK MM465WH MM470GY MM480WH MM485BK



MM460 (Back) MM465 (Back) MM470 (Back) MM480 (Back) MM485 (Back)

All New Media™ RJ45 modules are non-screened and are suitable for use with either Type A or Type B wiring conventions.

Telephone/Data Modules - Single Width (25mm x 50mm)

MM460BK Telephone Master Module - Black
MM460WH Telephone Master Module - White
MM460GY Telephone Master Module - Grey

MM465BK Telephone Secondary Module - Black
MM465WH Telephone Secondary Module - White
MM465GY Telephone Secondary Module - Grey

MM480BK RJ45 Cat-5e Module - Black
MM480WH RJ45 Cat-5e Module - White
MM480GY RJ45 Cat-5e Module - Grey

MM485BK RJ45 Cat-6 Module - Black
MM485WH RJ45 Cat-6 Module - White
MM485GY RJ45 Cat-6 Module - Grey

MM470BK RJ11 Module - Black
MM470WH RJ11 Module - White
MM470GY RJ11 Module - Grey

Dimensions: 460 465: 25mm (W) x 50mm (H) x 20.2mm (D) 470: 25mm (W) x 50mm (H) x 17.2mm (D)
 480 485: 25mm (W) x 50mm (H) x 18mm (D)



MM002BK MM022WH MM023BK MM025WH MM047BK



MM002 (Back) MM022 (Back) MM023 (Back) MM025 (Back) MM047 (Back)

Switch Modules - Single Width (25mm x 50mm)

MM002BK 10AX 2 Way Switch Module - Black
MM002WH 10AX 2 Way Switch Module - White

MM025BK 10AX Intermediate Switch Module - Black
MM025WH 10AX Intermediate Switch Module - White

MM022BK 20A DP Switch Module - Black
MM022WH 20A DP Switch Module - White

MM023BK 20A DP Switch With Neon Module - Black
MM023WH 20A DP Switch With Neon Module - White
 Neon positioned on top of rocker

13A Fused FCU Modules - Single Width (25mm x 50mm)

MM047BK 13A Fused FCU Module - Black
MM047WH 13A Fused FCU Module - White

Standards: BS EN 60669-1 047: BS 1363-4 BS 1362
Cable Size: 022 023: 3 x 2.5mm² or 2 x 4mm² 025 002 047: 4 x 1.5mm² or 3 x 2.5mm²
Dimensions: 25mm (W) x 50mm (H) x 22mm (D) 047: 25mm (W) x 50mm (H) x 24.7mm (D)



MM010BK



MM020WH



MM030BK



MM033WH



MM038WH



MM515



MM515



MM490BK



MM495WH



MM550WH



MM1001



MM490 (Back)



MM495 (Side)



MM501GY

HDMI Outlet with Flexible Connection (80mm Long)

Socket Outlet Modules - Twin Width (50mm x 50mm)

- MM010BK** 13A UK Socket Module - Black
- MM010WH** 13A UK Socket Module - White

- MM020BK** 16A European Schuko Socket Module - Black
- MM020WH** 16A European Schuko Socket Module - White

Not suitable for use with metal clad boxes CL311 and CL312 (40mm).
MM020 requires CL087 (1 gang 50mm) or CL088 (2 gang 50mm) if required.

- MM030BK** 16A 110V US Socket Module - Black
- MM030WH** 16A 110V US Socket Module - White

- MM033BK** 15A Round Pin Socket Module - Black
- MM033WH** 15A Round Pin Socket Module - White

- MM038BK** 5A Round Pin Socket Module - Black
- MM038WH** 5A Round Pin Socket Module - White

USB Charging Modules - Single Width (25mm x 50mm)

- MM515** 2A USB Charging Module - Black & White
Supplied with black and white front plates.

Standards: 010: BS 1363-2 020: IEC 60884 030: UL 498 033 038: BS 546
515: BS EN 60950-1 BS EN 61000-6-1 **Cable Size:** 3 x 2.5mm² or 2 x 4mm² 038: 4 x 1.5mm² or 3 x 2.5mm² 515: 2 x 1.5mm²
Dimensions: 010: 50mm (W) x 50mm (H) x 25.6mm (D) 020: 50mm (W) x 50mm (H) x 40.1mm (D)
030: 50mm (W) x 50mm (H) x 25.5mm (D) 033: 50mm (W) x 50mm (H) x 41mm (D)
038: 50mm (W) x 50mm (H) x 27.1mm (D) 515: 25mm (W) x 50mm (H) x 35mm (D)

LED Euromods - Twin Width (50mm x 50mm)

- MM1001CW** 240V 1W LED Euromod - Cool White
- MM1001WW** 240V 1W LED Euromod - Warm White
Pre-wired with 110mm flylead.

HDMI Modules - Single Width (25mm x 50mm)

- MM501BK** HDMI V2.0 With Fly-Lead Module - Black
- MM501WH** HDMI V2.0 With Fly-Lead Module - White
- MM501GY** HDMI V2.0 With Fly-Lead Module - Grey

Brush Modules - Single Width (25mm x 50mm)

- MM550BK** Single Brush Module - Black (Black Bristles)
- MM550WH** Single Brush Module - White (Black Bristles)
- MM550WHWH** Single Brush Module - White (White Bristles)
UK Design Registration: 002296483

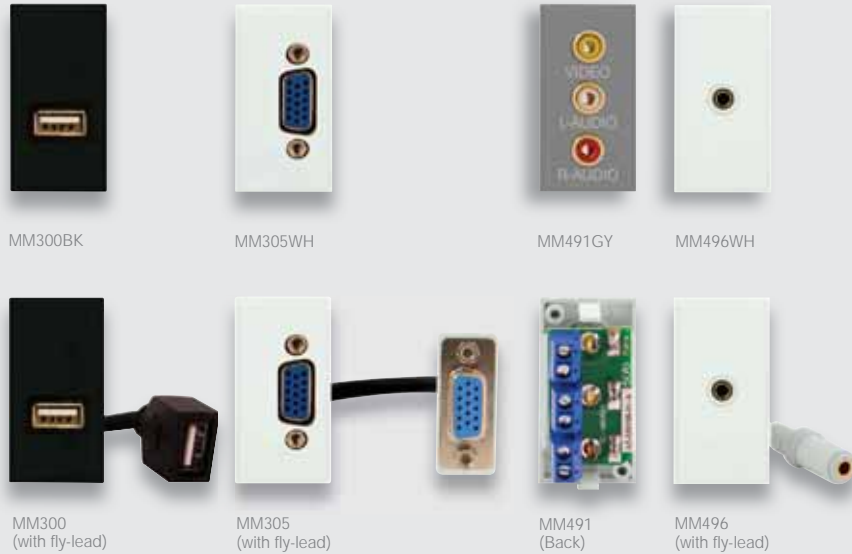
Speaker Modules - Single Width (25mm x 50mm)

- MM490BK** RCA/Phono Module (2 Outlets) - Black
- MM490WH** RCA/Phono Module (2 Outlets) - White
- MM490GY** RCA/Phono Module (2 Outlets) - Grey
- MM495BK** Loudspeaker Module (2 Outlets) - Black
- MM495WH** Loudspeaker Module (2 Outlets) - White
- MM495GY** Loudspeaker Module (2 Outlets) - Grey

Standards: 1001: BS EN 60598-1 BS EN 60598-2-2 BS EN 55015 BS EN 61547 & IEC TR 62778 BS EN 61000-3-2 & BS EN 61000-3-3
550: BS 5733
Dimensions: 490: 25mm (W) x 50mm (H) x 18.3mm (D) 495: 25mm (W) x 50mm (H) x 19.3mm (D)
501: 25mm (W) x 50mm (H) x 28.2mm (D) 550: 25mm (W) x 50mm (H) x 12.6mm (D)
1001: 50mm (W) x 50mm (H) x 30mm (D)



Modular LED stairlight fitted into a Define® New Media™ plate



MM300BK

MM305WH

MM491GY

MM496WH

MM300
(with fly-lead)

MM305
(with fly-lead)

MM491
(Back)

MM496
(with fly-lead)

Media Modules - Single Width (25mm x 50mm)

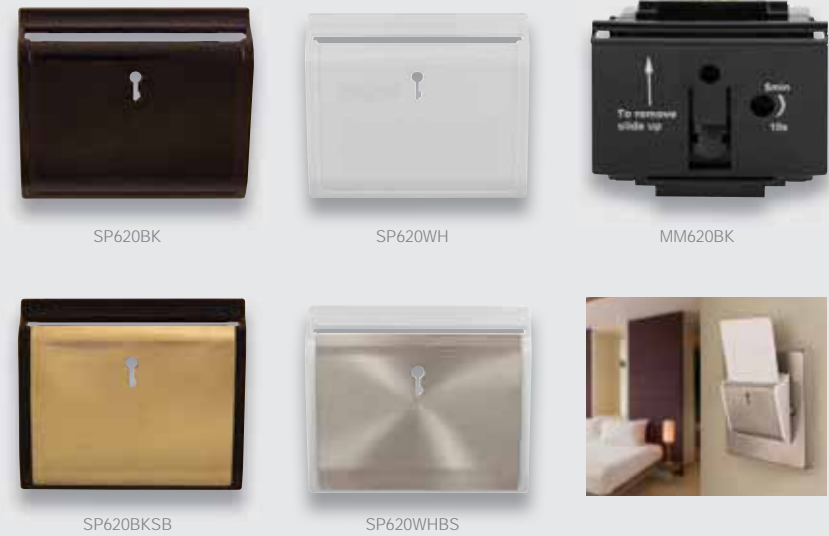
- MM300BK** USB Throughput With Fly-Lead Module - Black
- MM300WH** USB Throughput With Fly-Lead Module - White
- MM300GY** USB Throughput With Fly-Lead Module - Grey

- MM305BK** VGA With Fly-Lead Module - Black
- MM305WH** VGA With Fly-Lead Module - White
- MM305GY** VGA With Fly-Lead Module - Grey

- MM491BK** Triple RCA Module (With Screw Terminals) - Black
- MM491WH** Triple RCA Module (With Screw Terminals) - White
- MM491GY** Triple RCA Module (With Screw Terminals) - Grey

- MM496BK** 3.5mm Audio Jack With Fly-Lead Module - Black
- MM496WH** 3.5mm Audio Jack With Fly-Lead Module - White
- MM496GY** 3.5mm Audio Jack With Fly-Lead Module - Grey

Dimensions: 300: 25mm (W) x 50mm (H) x 41mm (D) 305: 25mm (W) x 50mm (H) x 50mm (D)
491: 25mm (W) x 50mm (H) x 18.3mm (D) 496: 25mm (W) x 50mm (H) x 38mm (D)



SP620BK

SP620WH

MM620BK

SP620BKSB

SP620WHBS

Full item requires (MM620BK) switch module, (311) unfinished plate and (SP620) hotel key card cover plate, see listed products below:

Hotel Key Card Switch Module - Twin Width (50mm x 50mm)

- MM620BK** 10A/6AX Hotel Key Card Timer Switch (Mechanical) Module Only - Black
- Blue LED illuminates when the key card is removed and the exit time has elapsed. Select Cover plate below:

Hotel Key Card Switch Module Covers

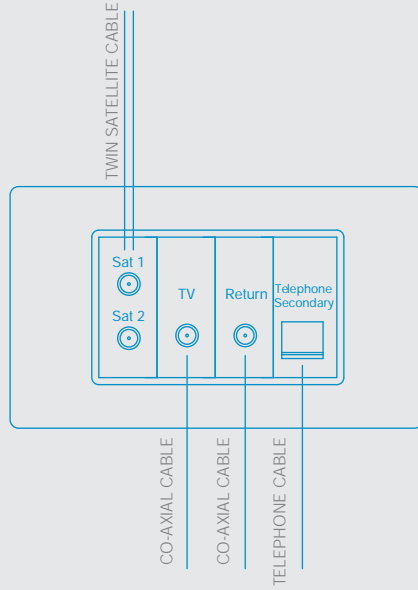
- SP620BK** Black
- SP620BKAB** Black - Antique Brass
- SP620BKBN** Black - Black Nickel
- SP620BKBR** Black - Polished Brass
- SP620BKBS** Black - Brushed Stainless
- SP620BKCH** Black - Polished Chrome
- SP620BKPN** Black - Pearl Nickel
- SP620BKSB** Black - Satin Brass
- SP620BKSC** Black - Satin Chrome
- SP620BKSS** Black - Stainless Steel

Hotel Key Card Switch Module Covers

- SP620MTBK** Black - Matt Black
- SP620PW** White - White (Metal)
- SP620WH** White - White (Plastic)
- SP620WHBR** White - Polished Brass
- SP620WHBS** White - Brushed Stainless
- SP620WHCH** White - Polished Chrome
- SP620WHPN** White - Pearl Nickel
- SP620WHSB** White - Satin Brass
- SP620WHSC** White - Satin Chrome
- SP620WHSS** White - Stainless Steel

Please note requires mounting plate **311 or **31102 see from page K9
Requires the MM620BK key card module.

Standards: BS EN 60669-1 BS EN 60669-2-3
Cable size: 2 x 1.5mm² **Time setting:** 10 seconds to 5 minutes
Dimensions: 50mm x 50mm x 32.5mm SP620: 61mm (W) x 52mm (H) x 20.5mm (D)
Key card not included. Accepts standard room cards: 85.6 x 53.98mm



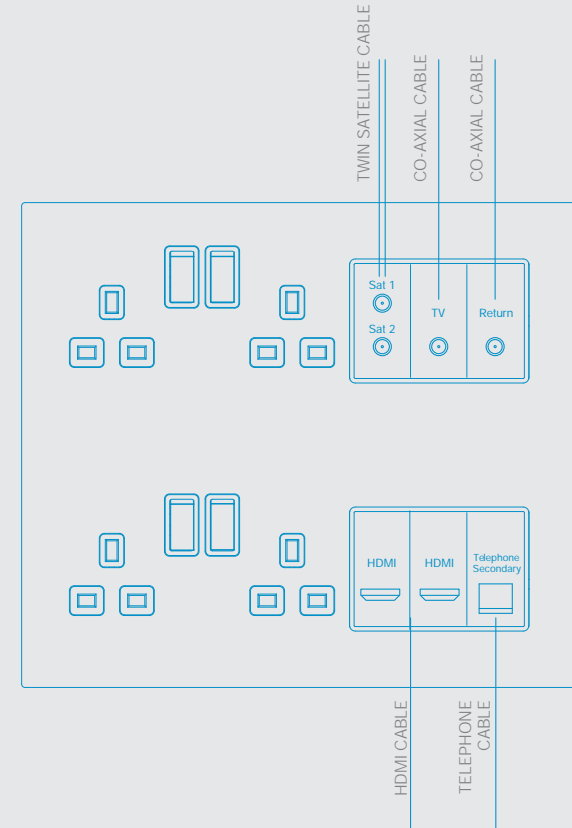
Products Used For This Configuration:

- 1 x **312 Media Plate
- 1 x MM406 Twin Satellite Module
- 1 x MM415 Co-axial Module
- 1 x MM410 Co-axial Module
- 1 x MM465 Telephone Secondary Module

Here, the input cables from the satellite dish and the TV aerial are connected directly to the rear of each module.

The return module is provided to allow the Sky signal to be shared throughout the property using a suitable distribution amplifier.

The use of a secondary telephone connection allows for easy connection between the Sky box and the telephone line.



Here, the input cables from the satellite dish and the TV aerial are connected directly to the rear of each module.

The return module is provided to allow the Sky signal to be shared throughout the property using a suitable distribution amplifier.

The use of a secondary telephone connection allows for easy connection between the Sky box and the telephone line.

An HDMI module is provided to facilitate a high definition connection between the Sky box and television.

Connection	MM405 Frequency	Single 'F' Satellite Insertion Loss (dB) (Typical)
In to Out	5 to 2300 MHz	1.6
Power pass to connection		

Connection	MM410 Frequency	Single IEC Female Insertion Loss (dB) (Typical)
In to Out	5 to 862 MHz	0.3
Power pass to connection		

Connection	MM415 Frequency	Single IEC Male Insertion Loss (dB) (Typical)
In to Out	5 to 862 MHz	0.3
Power pass to connection		

Connection	MM420 Frequency	Diplexed TV & Radio Insertion Loss (dB) (Typical)
In to Radio	87.5 to 230 MHz	2.0
In to TV	47 to 68 MHz	1.5
In to TV	254 to 862 MHz	2.0
Power pass to TV		

Connection	MM425 Frequency	Diplexed TV & Satellite Insertion Loss (dB) (Typical)
In to TV	47 to 862MHz	2.0
In to Satellite	950 to 2150 MHz	2.5
In to Satellite	2150 to 2400 MHz	3.0
Power pass to satellite		

Connection	MM430 Frequency	Triplexed TV, Radio & Satellite Insertion Loss (dB) (Typical)
In to Radio	87.5 to 230MHz	3.0
In to TV	47 to 68MHz	2.0
In to TV	254 to 862MHz	2.0
In to Satellite	950 to 2300 MHz	3.0
Power pass to satellite		

Connection	MM440 Frequency	Quad TV, Radio, Satellite 1 & Satellite 2 Insertion Loss (dB) (Typical)
In to Radio	87.5 to 230MHz	3.0
In to TV	470 to 862MHz	2.5
In to Satellite 1	950 to 2300 MHz	3.0
In to Satellite 2	25 to 2400 MHz	1.5
Power pass to satellite 1 & satellite 2		

All diplexed, triplexed and quad modules require installation of a signal combining distribution amplifier. Not suitable for use in the Republic of Ireland.

The range of diplexed, triplexed and quad modules are not compatible with 'Sky Q'.