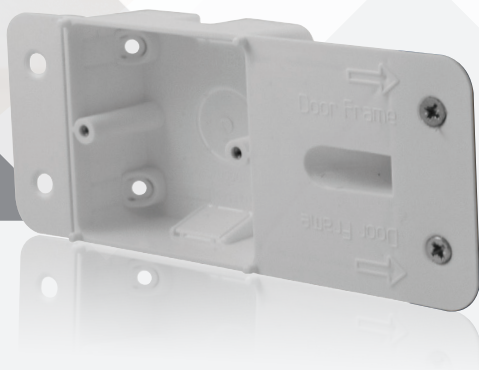


essentials™

Essential Products
for any Installation





essentials™

The Essentials™ Product Group Is Just That – ESSENTIAL

Contents

| | | | |
|-------------------------------|------------|------------------------------|------------|
| Galvanised Steel Boxes | m4 | Low Voltage Transformers | m31 |
| Dry Lining Boxes | m7 | Junction & Link Boxes | m32 |
| Studbox® | m10 | Socket & Blank Plates | m34 |
| IP66 Weatherproof Accessories | m13 | Fused Main Switch | m35 |
| Metal Clad Accessories | m16 | Rewireable Plug Tops | m36 |
| Red Accessories | m24 | Plug Top Fuses | m37 |
| Floor Accessories | m26 | Adaptors & Extension Sockets | m38 |
| Ceiling Accessories | m27 | IEC Lock® | m40 |

In addition to the long established Click® brand of moulded electrical accessory products we have developed and introduced additional accessory ranges, namely Polar™, Curva® & Mode®, as well as decorative metal ranges.

Whilst each of these ranges are unique in their own right, the plate accessory is only part of the complete wiring solution. Hence our range of Essentials™ illustrated herein.

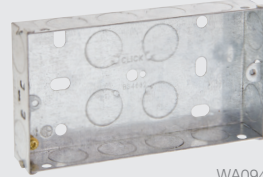
The Essentials™ group of products comprises those items that you will find in a wide variety of installations. Products such as junction boxes, flush mounted switch and socket boxes.



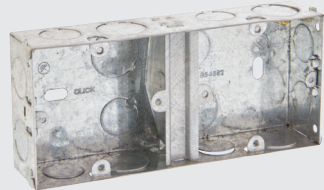
WA092



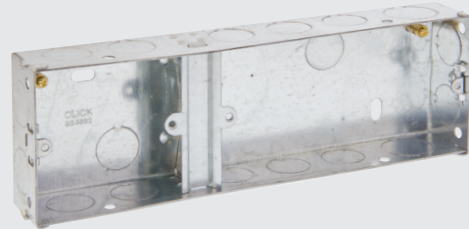
WA095



WA094



WA099/WA370



WA102/WA375



WA512

WA518

WA20518

WA20524

Galvanised Steel Back Boxes

- WA092** 1 Gang 16mm Deep Galvanised Steel K.O. Box
- WA093** 1 Gang 25mm Deep Galvanised Steel K.O. Box
- WA094** 2 Gang 25mm Deep Galvanised Steel K.O. Box
- WA095** 1 Gang 35mm Deep Galvanised Steel K.O. Box
- WA096** 2 Gang 35mm Deep Galvanised Steel K.O. Box
- WA097** 1 Gang 47mm Deep Galvanised Steel K.O. Box
- WA098** 2 Gang 47mm Deep Galvanised Steel K.O. Box
- WA099** 1 + 1 35mm Deep Dual Accessory Box
- WA102** 1 + 2 35mm Deep Dual Accessory Box
- WA671** 1 Gang 25mm Deep Architrave Box With 60.3mm Hole Centres
- WA672** 2 Gang 25mm Deep Architrave Box With 120.6mm Hole Centres

Galvanised Steel Back Boxes - Deco® Range Only

- WA370** 1 + 1 35mm Deep Dual Accessory Box (Deco® Range Only)
- WA375** 1 + 2 35mm Deep Dual Accessory Box (Deco® Range Only)
- WA571** 1 Gang 25mm Deep Architrave Galvanised Steel K.O. Box (Deco® Range Only)
- WA572** 2 Gang 25mm Deep Architrave Galvanised Steel K.O. Box (Deco® Range Only)

Cutout sizes: **WA099:** 158mm x 74mm **WA102:** 220mm x 74mm **WA370:** 168mm x 74mm **WA375:** 228mm x 74mm
WA571: 85mm x 30mm x 25mm **WA572:** 145mm x 30mm x 25mm

Galvanised Steel Back Boxes

- WA512** 2 Tier 47mm Deep K.O. Box
- WA518** 3 Tier 47mm Deep K.O. Box

GridPro® Flush Mounted Back Boxes

- WA20518** 18 Gang GridPro® Flush Mounted Back Box - 56mm Deep
- WA20524** 24 Gang GridPro® Flush Mounted Back Box - 56mm Deep

Back Box Depth: **WA512, WA518:** 47mm **WA20518, WA20524:** 56mm
Dimensions: **WA512:** 137mm x 137mm **WA518:** 137mm x 197mm
WA20518: 185mm x 197mm **WA20524:** 185mm x 255mm
Knockouts: **WA512:** 7 x 20mm, 3 x 25mm **WA518:** 8 x 20mm, 4 x 25mm
WA20518: 10 x 20mm, 6 x 25mm **WA20524:** 10 x 20mm, 6 x 25mm



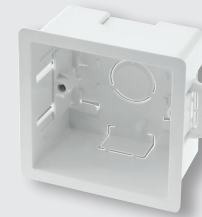
SP625



SP650



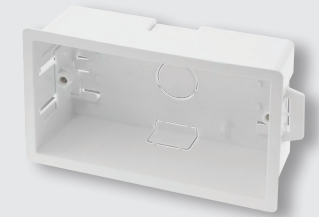
SP640



WA106P



WA108P



WA107P



GA100

Simply connects any combination of Click® dry lining boxes to provide the neatest installation of cavity boxes possible.

Security Screws

- SP622** Define® M3.5 Security Screw 22mm Long (Bag 100)
- SP623** Standard M3.5 Security Screw 50mm Long (Bag 100)
- SP625** Standard M3.5 Security Screw 25mm Long (Bag 100)
Require 2mm security allen key/driver.

Longer Fixing Screws

- SP640*** Define® 3.5mm Dia. 40mm Long Screws (Bag 100)
- SP650*** Standard 3.5mm Dia. 50mm Long Screws (Bag 100)
- SP675*** Standard 3.5mm Dia. 75mm Long Screws (Bag 100)

SP640 not available in Brass (BR).
Chrome finish may be used with white plate accessories.

Understanding the code:
Screws available in **BR** Brass, **CH** Chrome and **BN** Black Nickel finishes.
Suffix code with preferred finish.

Dry Lining Boxes

- WA087P** 1 Gang 35mm Deep Dry Lining Box
- WA088P** 2 Gang 35mm Deep Dry Lining Box
- WA106P** 1 Gang 47mm Deep Dry Lining Box
- WA107P** 2 Gang 47mm Deep Dry Lining Box
- WA108P** Round Ceiling 34mm Deep Dry Lining Box

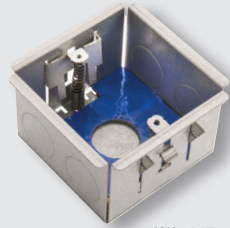
'Ezylink' Dry Lining Box Connector

- GA100** 'Ezylink' Dry Lining Box Connector

Cutout sizes: 1 Gang: 80mm x 80mm **2 Gang:** 140mm x 80mm **WA108P:** 65mm dia.



WA4135



WA4147



WA4235



WA4247



The intumescent layer within the box expands as the temperature increases filling the metal box cavity.

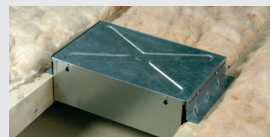


FlameGuard® Dry Lining Boxes

- WA4135 1 Gang 35mm Deep FlameGuard® Dry Lining Box
- WA4147 1 Gang 47mm Deep FlameGuard® Dry Lining Box
- WA4235 2 Gang 35mm Deep FlameGuard® Dry Lining Box
- WA4247 2 Gang 47mm Deep FlameGuard® Dry Lining Box

Insulation Support Boxes

- GB440 Insulation Support Box To Span 400mm Truss Centres
- GB460 Insulation Support Box To Span 600mm Truss Centres
Community Registered Design No. 000390091-0001
- GB400 Flatpacked Steel Insulation Support Box 220x220x120mm
- GB470 Insulation Support Box 340-620mm Between Floors
Community Registered Design No. 000497433-0001



GB440/460



GB400

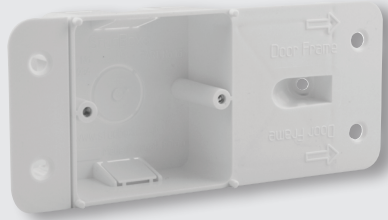
BS Standards: BS EN 1364-1:1999 Fire resistance, BS EN ISO 140-3:1995 Acoustic, BS 4662
Cutout sizes: 1 Gang: 73mm x 73mm 2 Gang: 132mm x 73mm

StudBox®

1. StudBox® is 450mm long - so no need to measure height from the floor on stud work.
2. Set StudBox® at marked height and insert first screw. Set level using spirit level then insert second screw.
3. Push out tabs and insert cables into required box /boxes. Use snips to remove plaster board marking points off the boxes not used.
4. Plasterer puts board in correct position then bangs in area of StudBox®.
5. Points on the face of the box mark exact position to cut out. No measuring required.
6. StudBox® fits tight to the back of board reducing noise and fire passage significantly. Working depth of 48mm (including 12.5mm plasterboard).



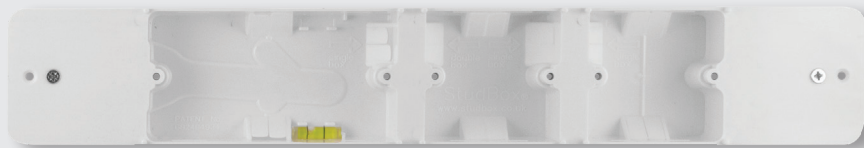
1 Gang Back Box | 2 Gang Back Box
6-in-1 Combination Recess Wiring Back Box



SB1G



SB2G



SB6IN1

StudBox®

StudBox® Back Boxes

- SB1G** StudBox® 1 Gang Back Box 120-600mm for Timber Metal Stud Work
- SB2G** StudBox® 2 Gang Back Box 130-600mm for Timber Metal Stud Work
- SB6IN1** StudBox® Stud Wall 6-in-1 Combination Recess Wiring Back Box

Back Box Depth: 35mm

AQUIP66®

IP66 Weatherproof Sockets & Switches

A comprehensive selection of weatherproof electrical accessory products are featured in the following pages. The polycarbonate construction makes the Aquip66® range a durable and long lasting heavy duty range of products.

All switch products are of modular construction allowing the installer total freedom in designing customised switching solutions according to on-site requirements.

All socket outlets are tested and approved to BS1363. Unfurnished enclosures are available for use in conjunction with our extensive range of MiniGrid® modules.



Furnished Switch Enclosures | Unfurnished Switch Enclosures
 Furnished Enclosures | Unfurnished Enclosures

Features & Benefits

Robust Construction

- Polycarbonate construction
- High impact resistance
- UV protected against fading
- Ergonomic Design
- Smooth operation of switches
- Neutral modern design suitable for most locations
- Flexible rubber base allows for mounting on most types of uneven surfaces

Multiple Gland Entry Position

- Multiple knockouts (20mm) for entry from all angles

Weatherproof - IP66

- Offers high level of protection against ingress of water jets and dust

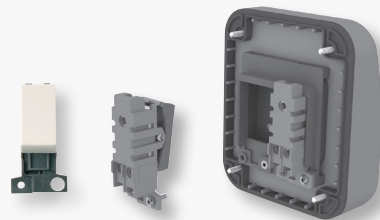
Multiple Switch Configurations

- Designed to fit any MiniGrid® modules (13A Max)



MINIGRID®

The products illustrated in this section of the catalogue are furnished enclosures and unfurnished enclosures. For comprehensive information on the full range of modules available please refer to the MiniGrid® section of the catalogue.



OA411AG / OA401AG



OA412AG / OA402AG

AQUIP66®

IP66 Weatherproof Switches

- OA411AG** 1 Gang 2 Way IP66 Weatherproof Switch Unit
Fitted with a 2-way MiniGrid® module
- OA412AG** 2 Gang 2 Way IP66 Weatherproof Switch Unit
Fitted with 2 x 2-way MiniGrid® modules

IP66 Weatherproof Switch Enclosures

- OA401AG** 1 Gang IP66 Weatherproof Unfurnished Switch Unit
- OA402AG** 2 Gang IP66 Weatherproof Unfurnished Switch Unit
Modules supplied separately

Standards: BS EN 60529 (Enclosure), BS EN 60669 (Switch) **Knock-outs:** 20mm **Cable Size:** 4 x 1.5mm², 1 x 6mm², 2 x 2.5mm²
Dimensions: From Front: 100mm (Height) x 85.5mm (Width) x 74mm (Depth - with Gasket)
From Rear: 105.5mm (Height) x 90.5mm (Width) **Back Box Depth:** 16mm - 47mm



OA035AG / OA501AG



OA036AG / OA502AG

AQUIP⁶⁶

13A IP66 Weatherproof Switched Sockets

OA035AG 13A 1 Gang DP IP66 Weatherproof Switched Socket Unit

Fitted with 1 gang Mode® switched socket

OA036AG 13A 2 Gang DP IP66 Weatherproof Switched Socket Unit

Fitted with a 2 gang Mode® switched socket

IP66 Weatherproof Socket Enclosures

OA501AG 1 Gang IP66 Weatherproof Unfurnished Unit

OA502AG 2 Gang IP66 Weatherproof Unfurnished Unit

Accessory supplied separately. Accepts accessories up to 35mm deep

Standards: BS EN 60529 (Enclosure), BS 1363 (Socket) **Knock-outs:** 20mm **Cable Size:** 4 x 2.5mm²

Dimensions: 1 Gang: From Front: 155mm (Height) x 100mm (Width) x 95mm (Depth - with Gasket)

From Rear: 130mm (Height) x 105mm (Width), **2 Gang: From Front:** 155mm (Height) x 158mm (Width) x 95mm (Depth - with Gasket)

From Rear: 130mm (Height) x 165mm (Width) **Back Box Depth:** 25mm - 47mm

Metal Clad Accessories

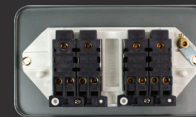
10AX Switches | Unfurnished Switch Plates
 20A Switches | 13A Socket Outlets
 Fused Connection Units | 45A Switches
 Telephone & Coaxial Socket Outlets
 New Media™ Plates | Mounting Boxes &
 Blank Plates

A comprehensive selection of Metal Clad electrical accessory products are featured in the following pages. Electrophoretically coated plates and back boxes provide a durable and long lasting heavy duty finish to this attractive range of products.

All switch products are of modular construction allowing the installer total freedom in designing customised switching solutions according to on-site needs.

All socket outlets and spurs are tested and approved to BS1363. Unfurnished plates and mounting boxes are available for use in conjunction with our extensive range of MiniGrid® and New Media™ modules.

MINIGRID®



The products illustrated in this section of the catalogue are finished plates and unfurnished mounting plates.

For comprehensive information on the full range of modules available please refer to our MiniGrid® product brochure.





CL010/011

CL012

CL013

CL019

CL105

Plates Switches - MiniGrid®

- CL010 10AX 1 Gang 1 Way Plate Switch
- CL011 10AX 1 Gang 2 Way Plate Switch
- CL011B 10AX 1 Gang 2 Way Plate Switch (No Knockouts)
- CL012 10AX 2 Gang 2 Way Plate Switch
- CL012B 10AX 2 Gang 2 Way Plate Switch (No Knockouts)
- CL013 10AX 3 Gang 2 Way Plate Switch
- CL019 10AX 4 Gang 2 Way Plate Switch
- CL105 10AX 6 Gang 2 Way Plate Switch

Plates Switches

- CL025 10AX 1 Gang Intermediate Switch

Standards: BS EN 60669

Cable Size: 4 x 1.5mm² / 2 x 2.5mm² / 1 x 6mm² Maximum **Back Box Depth:** 40mm Minimum
Dimensions: 1 Gang: (80mm x 80mm), 2 Gang: (140mm x 80mm) **Knock-outs:** 20mm



CL401

CL402

CL403

CL404

CL426

CL518

MINIGRID® For the complete range of MiniGrid® modules please see our dedicated MiniGrid® section.

Unfurnished Plates - MiniGrid®

- CL401 1 Gang MiniGrid® Unfurnished Plate - 1 Aperture
- CL402 1 Gang MiniGrid® Unfurnished Plate - 2 Apertures
- CL403 1 Gang MiniGrid® Unfurnished Plate - 3 Apertures
- CL404 2 Gang MiniGrid® Unfurnished Plate - 2 x 2 Apertures
CL plates utilise WH finished MiniGrid® modules.
- CL406 2 Gang MiniGrid® Unfurnished Plate - 2 x 3 Apertures
- CL426 2 Gang MiniGrid® Unfurnished Plate - 6 In-Line Apertures

2 Tier Unfurnished Plates - MiniGrid®

- CL512 2 Tier MiniGrid® Unfurnished Plate - 12 Apertures - Metal Clad
Decorative finished Deco® victorian plate finishes also available. 2 x GR100 yokes required, see page c8.

3 Tier Unfurnished Plates - MiniGrid®

- CL518 3 Tier MiniGrid® Unfurnished Plate - 18 Apertures - Metal Clad
Decorative finished Deco® victorian plate finishes also available. 3 x GR100 yokes required, see page c8.

Back Box Depth: 40mm Minimum **Cable Size:** CL512 & CL518: Dependant on module used
Dimensions: 1 Gang: (80mm x 80mm), 2 Gang: (140mm x 80mm) CL512: (148mm x 148mm) CL518: (148mm x 207mm)
Knock-outs: 20mm



CL035



CL036



CL771



CL770



CL835



CL840

Switched Socket Outlets

- CL035** 13A 1 Gang DP Switched Socket
- CL035B** 13A 1 Gang DP Switched Socket (No Knockouts)
- CL036** 13A 2 Gang DP Switched Socket
- CL036B** 13A 2 Gang DP Switched Socket (No Knockouts)

Switched Socket Outlets

- CL835** 13A 1 Gang Switched Socket With Outboard Neon Rocker
- CL840** 13A 2 Gang Switched Socket With Outboard Neon Rockers

Switched Socket Outlets With USB

- CL770** 13A 2 Gang Switched Socket With 2.1A USB Outlet (Twin Earth)
- CL771** 13A 1 Gang Switched Socket With 2.1A USB Outlet

Standards: BS1363 **770, 771:** BS5733, BS60950-1, EN61000-6-1, EN 61000-6-3 **Back Box Depth:** 40mm Minimum
Cable Size: 4 x 2.5mm² / 2 x 4mm² **Knock-outs:** 20mm
Dimensions: 1 Gang: (80mm x 80mm), **2 Gang:** (140mm x 80mm)



CL1035



CL1835



CL1036



CL1840

Safety Shutter Sockets

- CL1035** 13A 1 Gang DP Safety Shutter Switched Socket
- CL1835** 13A 1 Gang DP Safety Shutter Switched Socket With Neon
- CL1036** 13A 2 Gang DP Safety Shutter Switched Socket
- CL1840** 13A 2 Gang DP Safety Shutter Switched Socket With Outboard Rockers & Neons (Twin Earth)
- CL1035B** 13A 1 Gang DP Safety Shutter Switched Socket (No Knockouts)
- CL1835B** 13A 1 Gang DP Safety Shutter Switched Socket With Neon (No Knockouts)
- CL1036B** 13A 2 Gang DP Safety Shutter Clean Earth Switched Socket (No Knockouts)
- CL1840B** 13A 2 Gang DP Safety Shutter Switched Socket With Outboard Rockers & Neons (Twin Earth) (No Knockouts)

Standards: BS1363 **Back Box Depth:** 40mm Minimum
Cable Size: 4 x 2.5mm² / 2 x 4mm² **Knock-outs:** 20mm
Dimensions: 1 Gang: (80mm x 80mm), **2 Gang:** (140mm x 80mm)



20A Control Switches with Optional Flex Outlet

- CL022** 20A DP Switch
- CL023** 20A DP Switch With Neon

45A Switches

- CL200** 45A 1 Gang DP Switch
- CL201** 45A 1 Gang DP Switch With Neon
- CL202** 45A 2 Gang DP Switch
- CL203** 45A 2 Gang DP Switch With Neon

Fused Connection Units With Optional Flex Outlet

- CL049** 3A Fused Connection Unit
- CL050** 13A Fused Connection Unit
- CL051** 13A DP Switched Fused Connection Unit
- CL051B** 13A DP Switched Fused Connection Unit (No Knockouts)
- CL052** 13A DP Switched Fused Connection Unit With Neon
- CL053** 13A Fused Connection Unit With Neon

Standards: BS EN 60669 20A, 13A & 3A: BS 1363, and BS 1362 (Fuse)
Cable Size: 1 x 16mm² 13A & 3A: 3 x 2.5mm² or 2 x 4mm² **Knock-outs:** 20mm
Dimensions: 1 Gang: (80mm x 80mm), 2 Gang: (140mm x 80mm) **Back Box Depth:** 40mm 45A: 50mm



All New Media™ plates are suitable for use with standard euro module inserts. Selecting from a range of module inserts covering all manner of media transfer, the installer will now be able to configure their own arrangement of tv, radio or satellite reception, plus speaker, telephone and data outlets. All modules can be inserted into single or double wall plates, fitted onto standard switch and socket boxes.



Telephone & Coaxial Socket Outlets

- CL120** Single Telephone Outlet - Master
- CL158** Single Isolated Coaxial Outlet

Unfurnished Plates - New Media™

- CL311** 1 Gang New Media™ Unfurnished Plate - 2 Apertures
- CL312** 2 Gang New Media™ Unfurnished Plate - 4 Apertures

Isolated outlets will filter out any interference, if a 2 way signal is required, i.e. for use with satellite hard wire extensions, then a non-isolated outlet is required.

Back Box Depth: 40mm Minimum, **Knock-outs:** 20mm
Dimensions: 1 Gang: (80mm x 80mm), 2 Gang: (140mm x 80mm)



CL060



CL085



CL061



CL086

Mounting Boxes and Blank Plates

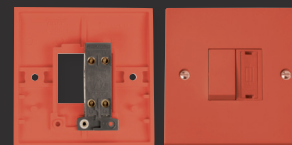
- CL060 1 Gang Blank Plate
- CL061 2 Gang Blank Plate
- CL083 1 Gang 40mm Deep Mounting Box
- CL084 2 Gang 40mm Deep Mounting Box
- CL085 1 Gang 40mm Deep Mounting Box (No Knockouts)
- CL086 2 Gang 40mm Deep Mounting Box (No Knockouts)
- CL087 1 Gang 50mm Deep Mounting Box
- CL088 2 Gang 50mm Deep Mounting Box

Dimensions: 060: 80mm x 80mm x 4mm 061: 140mm x 80mm x 4mm
 083, 085: 80mm x 80mm x 40mm 084, 086: 140mm x 80mm x 40mm

Red Accessories & Floor Accessories

10AX Switches | Unfurnished Switch Plates
 13A Socket Outlets | Fused Connection
 Units Telephone & Coaxial Socket Outlets
 New Media™ Plates

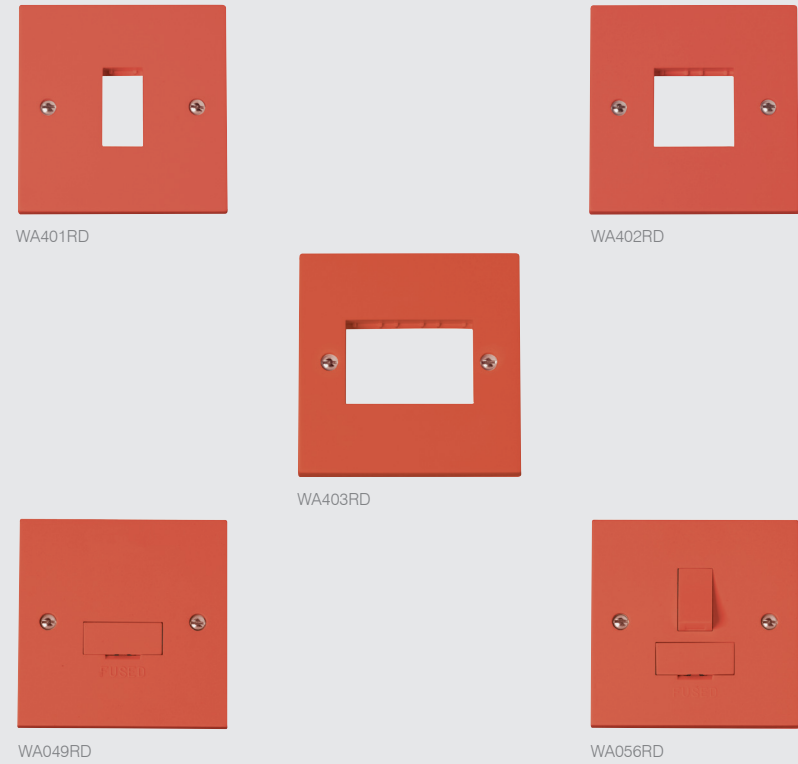
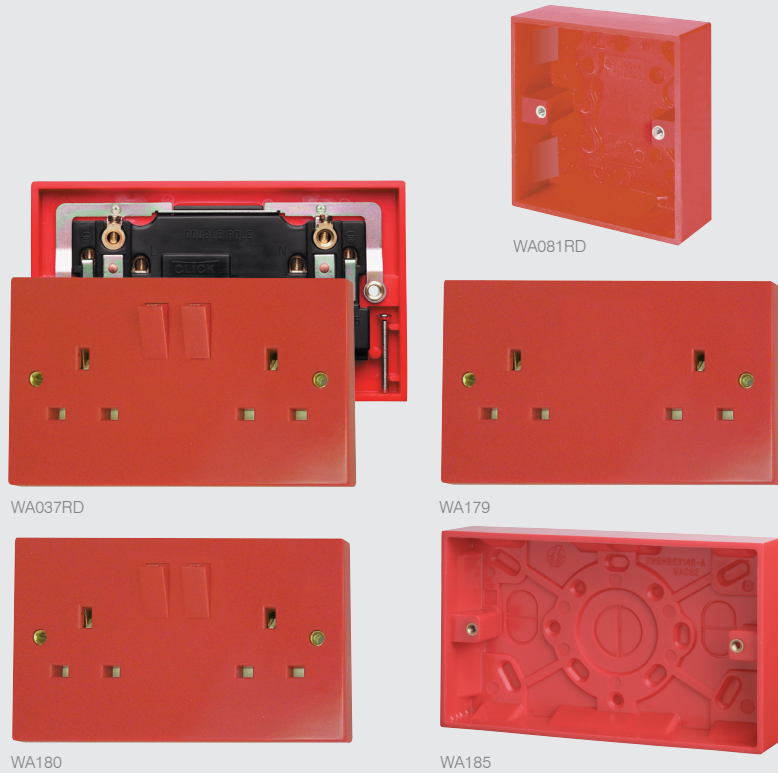
A selected range of special purpose
 moulded & Stainless Steel accessories.



The products illustrated in this section
 of the catalogue are finished plates and
 unfurnished mounting plates.

For comprehensive information on the full
 range of modules available please refer to our
 MiniGrid® product brochure.





Socket Outlets

- WA037RD** 13A 2 Gang DP Switched Socket Clean Earth
- WA179** 13A 2 Gang Unswitched Socket
- WA180** 13A 2 Gang DP Switched Socket
(Fitted with twin earth terminals)

Moulded Surface Pattress Boxes - Urea

- WA081RD** 1 Gang 25mm Deep Surface Pattress Box
- WA185** 2 Gang 25mm Deep Surface Pattress Box

Standards: BS 1363

Back Box Depth: 25mm Minimum **Cable Size:** 4 x 2.5mm² / 2 x 4mm² **13A:** 2 x 2.5mm²
Dimensions: **1 Gang:** (86mm x 86mm x 11mm), **2 Gang:** (146mm x 86mm x 11mm)



For the complete range of compatible modules, see the dedicated MiniGrid® section, page j18.

Unfurnished Plates - MiniGrid®

- WA401RD** 1 Gang MiniGrid® Unfurnished Plate - 1 Aperture
- WA402RD** 1 Gang MiniGrid® Unfurnished Plate - 2 Apertures
- WA403RD** 1 Gang MiniGrid® Unfurnished Plate - 3 Apertures

Fused Connection Units

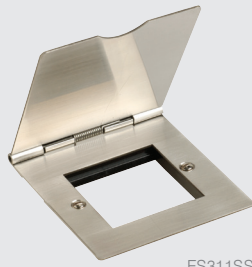
- WA049RD** 3A Fused Connection Unit
- WA056RD** 3A DP Switched Fused Connection Unit

Standards: BS 1363 and BS 1362 (fuse)

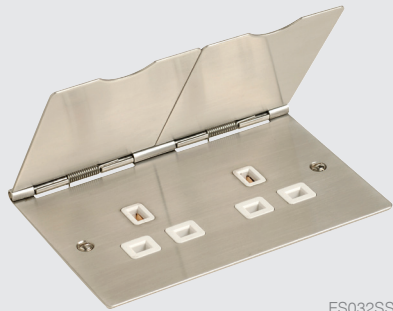
Back Box Depth: Dependant on modules used, **WA049RD/056RD:** 25mm Minimum
Cable Size: Dependant on modules used, **WA049RD/056RD:** 3 x 2.5mm² or 2 x 4mm²
Dimensions: **1 Gang:** (86mm x 86mm x 11mm), **2 Gang:** (146mm x 86mm x 11mm)



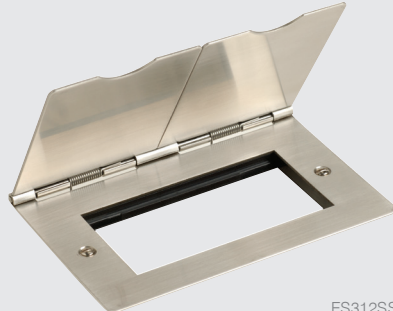
FS030SS



FS311SS



FS032SS



FS312SS



For a complete range of New Media™ modules please see our dedicated New Media™ section.

Floor Socket Outlets

- FS030SS** 13A 1 Gang Floor Socket
- FS032SS** 13A 2 Gang Floor Socket
13A floor socket outlets BS Kitemark Approved

Unfurnished Floor Plates - For Use With New Media™ Modules

- FS311SS** 1 Gang New Media™ Unfurnished Floor Plate - 2 Apertures
- FS312SS** 2 Gang New Media™ Unfurnished Floor Plate - 4 Apertures

Standards: BS 1363
Back Box Depth: 311/312: Dependent on modules fitted 030/032: 35mm Minimum
Cable Size: 311/312: Dependent on modules fitted 030/032: 4 x 2.5mm² / 2 x 4mm²
Dimensions: 030/311: 86mm x 93mm 032/312: 146mm x 93mm



PRW208



PRW210/
PRW211



PRC009



PRC210



PRW213



PRC216

Pull Cord Switches

- PRC009** 10AX 2 Way Ceiling Pull Cord Switch
- PRC210** 10AX 2 Way Pull Cord Switch
- PRC216** 16A DP Pull Cord Switch With Neon
Decorative covers available, see overleaf.

Pull Cord Switches

- PRW208** 10A 3 Pole Fan Isolation Pull Cord Switch
- PRW210** 45A DP Pull Cord Switch With Mechanical 'On/Off' & Neon
- PRW211** 50A DP Pull Cord Switch With Mechanical 'On/Off' & Neon
(Twin Terminal Screws)
- PRW213** 50A DP Round Pull Cord Switch With Mechanical 'On/Off', Neon & Pattress
(Twin Terminal Screws) C/W Pattress

Standards: BS EN 60669
Cable Size: 009, 208, 210: 3 x 2.5mm² / 1 x 6mm² 211: 2 x 6mm² / 1 x 25mm² 213: 2 x 6mm² / 1 x 25mm² 216: 3 x 1.5mm² / 2 x 2.5mm²
Dimensions: PRC009: 75.5mm Dia., x 43.5mm PRC210/216: 70mm Dia. x 42mm PRW208: 86mm x 86mm x 43mm
 PRW210/211: 86mm x 86mm x 43mm PRW213: 100mm Dia. x 77mm



CV210CH



PRC210 + CV210CH

Pull Cord Switches

- CV210CH Metallic Cover for PRC210
- CV210SC Metallic Cover for PRC210

Dimensions: 72mm Dia. x 44mm



PRC006



PRC008



PRC015



PRC017



PRC031/033

For our full range of wiring accessories, see our dedicated Curva®, Polar™ and Mode® sections.

Pendant Sets & Ceiling Rose

- PRC031 6" T2 BC Ceiling Pendant Set
- PRC033 9" T2 BC Ceiling Pendant Set
- PRC038 6" T2 BC TRS Pendant Set

T2 Batten Lampholders

- PRC006 T2 BC Batten Lampholder Straight Skirt
- PRC007 T2 BC Batten Lampholder H.O. Skirt
- PRC008 T2 BC Angled Batten Lampholder Straight Skirt

T2 Loop-In Batten Lampholders

- PRC015 T2 BC Loop-In Batten Lampholder With Straight Skirt
- PRC016 T2 BC Loop-In Batten Lampholder With H.O. Skirt
- PRC017 T2 BC Loop-In Angled Batten Lampholder With H.O. Skirt

Standards: BS 67, BS EN 61184 **Cable Size:** 2 x 1.5mm²

Dimensions: PRC006/7/8: Base 65mm Dia. x 62mm **015/16/17:** Base 86mm Dia x 77mm **031/033:** Base 86mm Dia



T2 Lampholders

- PRC003** T2, BC Cord Grip Pendant Lampholder
- PRC020** T2 BC Cord Grip TRS Lampholder
- PRC004** T2 BC ½" Thread Entry Cord Grip Lampholder Straight Skirt
- PRC011** T2 BC 10mm Thread Entry Cord Grip Lampholder Straight Skirt (with straight skirt)

T2 Push-Bar Lampholders

- PRC005** T2 BC ½" Thread Entry Cord Grip Switched Lampholder Straight Skirt
- PRC012** T2 BC 10mm Thread Entry Cord Grip Switched Lampholder Straight Skirt Lampholder with straight skirt and push-bar

Pendant Sets & Ceiling Rose

- PRC001** Ceiling Rose Fitted With Clear Polycarbonate Base
- PRC029** 6" T2 Pendant Set Without Rose

Transformers

- TR060** 12V 20-60Va Pre-Wired Electronic Transformer
- TR301** 12V 0.5 -15W LED Driver

Standards: BS EN 61184 001: BS 67
Cable Size: 1.0mm² 001: 2 x 1.5mm²
Dimensions: PRC001: 86mm x 30mm



WA070



WA071



WA220



WA222



WA073



WA079



WA077



WA227



WA228

Junction Boxes - White

- WA070** 5A Junction Box Selective Entry 4 Terminal
- WA071** 20A Junction Box Selective Entry 4 Terminal
- WA072** 30A Junction Box Selective Entry 3 Terminal
- WA073** 20A Junction Box Selective Entry 6 Terminal
- WA074** 20A 58mm Diameter Junction Box 4 Terminal

Junction Boxes - Brown

- WA075** 5A Junction Box Selective Entry 4 Terminal
- WA076** 20A Junction Box Selective Entry 4 Terminal
- WA077** 30A Junction Box Selective Entry 3 Terminal
- WA078** 20A Junction Box Selective Entry 6 Terminal
- WA079** 20A 58mm Diameter Junction Box 4 Terminal

Junction Boxes

- WA220** 60A Junction Box 3 Terminal - White
- WA222** 60A Junction Box 3 Terminal - Brown
UK Design Registration No. 3009706
- WA227** 100A 1 Pole 5 x 35mm² Link Box - Black
- WA228** 100A 2 Pole 5 x 35mm² Link Box - Black

Standards: BS 6220
Cable Size: (Per Terminal): **070, 075:** 2 x 1.5mm² **071, 076:** 4 x 1.5mm² **072, 077:** 2 x 4mm²
073, 078: 4 x 1.5mm² **074, 079:** 4 x 1.5mm²
Dimensions: **070, 075:** 60mm Dia. x 23mm **071, 076:** 80mm Dia. x 30mm **072, 077:** 90mm Dia. x 35mm
073, 078: 86mm Dia. x 30mm **074, 079:** 55mm Dia. x 25mm

Standards: BS 5733
Cable Size: **227,228:** 1 x 35mm² **220,222:** 1 x 25mm²
Dimensions: **220/222:** 153mm x 91mm x 35mm **227:** 66mm x 49mm x 34mm **228:** 66mm x 49mm x 34mm

m34

ESSENTIALS™



CMA215



PRW217



PRW215



PRW218

45A Cooker Connection Plates

- CMA215** 45A 1 Gang Cooker Connection Plate
- PRW215** 45A 1 Gang Cooker Connection Plate
- PRW217** 45A Easyfit Dual Appliance Outlet Plate

UK Design Registration No. 3015175

Pattress Box for PRW217 - Urea

- PRW218** 35mm Deep Pattress Box For Use With PRW217

Standards: 215/217: BS 5733
Back Box Depth: 215: 35mm Minimum 217: 25mm Minimum
Cable Size: 215: 1 x 16mm² 217: 10mm²
Dimensions: 215: 84mm x 84mm x 23mm 217: 84mm x 130mm x 27mm

m35

ESSENTIALS™



DB700



DB750



DB981



DB701



DB751



DB790

| Fuse Manufacturer | | | | |
|-------------------|----------|--------|------|-------|
| Rating | Bussmann | Lawson | MEM | GE |
| 40A | 40KR85 | ME40 | 404R | RHF40 |
| 45A | 45KR85 | ME45 | 454R | - |
| 50A | 50KR85 | ME50 | 504R | RHF50 |
| 60A | 60KR85 | ME60 | 604R | RHF60 |
| 70A | 70KR85 | ME70 | - | - |
| 80A | 80KR85 | ME80 | 804R | RHF80 |
| 100A | 100KR85 | ME100 | - | - |

80A and 100A variants are supplied with an 80A Bussmann fuse as standard. However the following fuses will fit:

Fused Main Switch

- DB700** 80A Fused Main Switch (80A HRC Fuse Fitted)
- DB701** 80A Fused Main Switch (80A HRC Fuse Fitted) - Lockable
- DB750** 100A Fused Main Switch (80A HRC Fuse Fitted)
- DB751** 100A Fused Main Switch (80A HRC Fuse Fitted) - Lockable
- DB790** Metal Enclosure for Fused Main Switch (DB700/701)
- DB791** Metal Enclosure for Fused Main Switch (DB750/751)
- DB981** Elongated Cable Shroud (Packaged Individually)

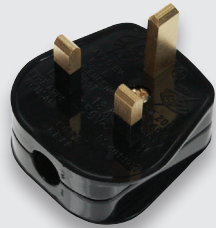
Standards: BS EN 60947
Cable Size: **DB700/DB701:** 1 x 25mm² **DB750/DB751:** 1 x 35mm² **Dimensions:** **DB700/DB701:** 120mm x 80mm x 55mm
DB750/DB751: 133mm x 101mm x 60mm **DB981:** 80mm x 90mm x 45mm



PA330



PA166



PA312



PA380
Non-standard plug



FU023



FU022



FU031



FU038

13A UK Bar Grip Plug Tops (BS1363/A)

- PA320 13A Resilient Plug Top (13A Fused) Bar Grip - White
- PA321 13A Resilient Plug Top (3A Fused) Bar Grip - White
- PA322 13A Resilient Plug Top (5A Fused) Bar Grip - White
- PA330 13A Resilient Plug Top (13A Fused) Bar Grip - Black
- PA331 13A Resilient Plug Top (3A Fused) Bar Grip - Black
- PA332 13A Resilient Plug Top (5A Fused) Bar Grip - Black

13A UK Fast Grip Plug Tops (BS1363/A)

- PA301 13A Resilient Plug Top (13A Fused) Fast Grip - White
- PA302 13A Resilient Plug Top (3A Fused) Fast Grip - White
- PA303 13A Resilient Plug Top (5A Fused) Fast Grip - White
- PA310 13A Resilient Plug Top (13A Fused) Fast Grip - Black
- PA311 13A Resilient Plug Top (3A Fused) Fast Grip - Black
- PA312 13A Resilient Plug Top (5A Fused) Fast Grip - Black

Non Fused Round Pin Rewireable Plug Tops

- PA165 2A Round Pin Plug - White
- PA175 2A Round Pin Plug - Black
- PA166 5A Round Pin Plug - White
- PA167 15A Round Pin Plug - White
- PA176 5A Round Pin Plug - Black
- PA177 15A Round Pin Plug - Black

Non-Standard Plug Tops

- PA340TR 13A Transparent Plug Top (13A Fused) Fast Grip - Clear

Non-Standard Resilient Plug Tops

- PA380RD 13A Fused Non-Standard Plug - Red
- PA380WH 13A Fused Non-Standard Plug - White
For use with non-standard Click® Mode® sockets CMA935 and CMA936. See page f13.

BSI & ASTA Approved Plug Top Fuses (Boxed)

- FU030 Box Of 100 13A Fuses (10 X Sachets Of 10)
- FU031 Box Of 100 3A Fuses (10 X Sachets Of 10)
- FU032 Box Of 100 5A Fuses (10 X Sachets Of 10)

BSI & ASTA Approved Plug Top Fuses (Bulk Packed)

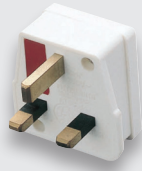
- FU021 13A Cartridge Fuse (Bulk Bag Of 1000 Pcs)
- FU022 5A Cartridge Fuse (Bulk Bag Of 1000 Pcs)
- FU023 3A Cartridge Fuse (Bulk Bag Of 1000 Pcs)

BSI & ASTA Approved Plug Top Fuses (Carded)

- FU035 Card Of 4 X 13A Fuses
- FU036 Card Of 4 X 3A Fuses
- FU037 Card Of 4 X 5A Fuses
- FU038 Card Of 6 X Assorted Fuses (2 X 13A, 2 X 5A & 2 X 3A)

Standards: BS 1363 **Round Pin:** BS 546

Standards: BS 1362



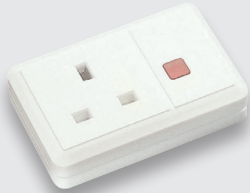
PA040



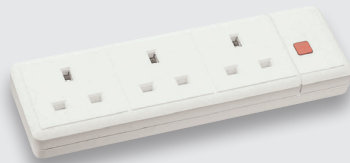
PA041A



PA042A



ES001



ES008

Multipugs And Adaptors

- PA040** 1 Amp Fused Shaver Adaptor - White
- PA041A** 13A 2 Way Resilient Adaptor - White
- PA042A** 13A Fused 3 Way Adaptor - White

Extension Sockets And Leads

- ES001** 13A 1 Gang Trailing Socket With Neon
- ES002** 13A 2 Gang Trailing Socket With Neon
- ES003** 13A 4 Gang Trailing Socket With Neon
- ES008** 13A 3 Gang Trailing Socket With Neon
Cable not included

Standards: BS 1363 040: BS 5733

IEC LOCK®

Unique Lockable Female C13 & C19 IEC Connectors and Outlets

The IEC Lock® range can be used with any standard IEC inlets & guards against accidental disconnection of Computers, PDU's, Servers, most Network Devices & other essential equipment.



C13 IEC Lock® Connectors
C19 IEC Lock® Connectors

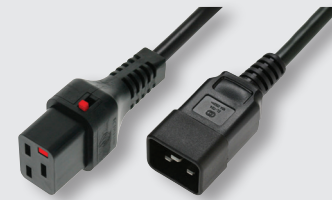




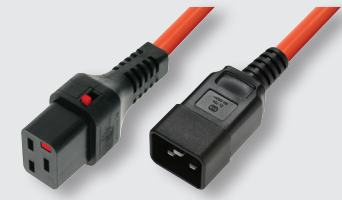
PC1002W



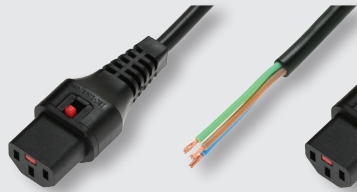
PC938W



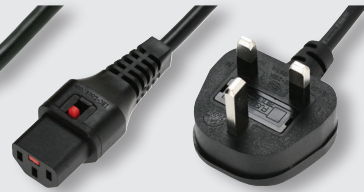
PC1284W



PC1293W



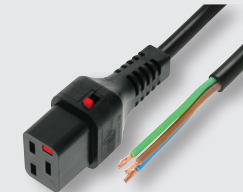
PC979W



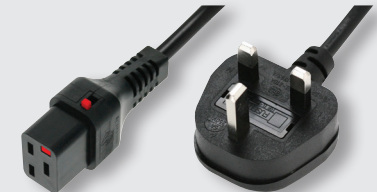
PC980W



PA130100BK



PC1174W



PC1214W

C13 IEC Lock® Connector to C14 Plug H05VV-F Leads

- PC1002W C13 IEC Lock® to C14 Plug 3 x 1.00mm 0.5m - Black
- PC1003W C13 IEC Lock® to C14 Plug 3 x 1.00mm 1.5m - Black
- PC1021W C13 IEC Lock® to C14 Plug 3 x 1.00mm 2.0m - Black
- PC1022W C13 IEC Lock® to C14 Plug 3 x 1.00mm 3.0m - Black
- PC1024W C13 IEC Lock® to C14 Plug 3 x 1.00mm 1.0m - Black
- PC938W C13 IEC Lock® to C14 Plug 3 x 1.00mm 1.0m - Orange
- PC939W C13 IEC Lock® to C14 Plug 3 x 1.00mm 1.5m - Orange
- PC940W C13 IEC Lock® to C14 Plug 3 x 1.00mm 2.0m - Orange
- PC942W C13 IEC Lock® to C14 Plug 3 x 1.00mm 3.0m - Orange
- PC951W C13 IEC Lock® to C14 Plug 3 x 1.00mm 0.5m - Orange

C13 IEC Lock® Connector to Free End H05VV-F Leads

- PC1025W C13 IEC Lock® to Free End 3 x 1.00mm 2.0m - Black
- PC979W C13 IEC Lock® to Free End 3 x 1.00mm 3.0m - Black

C13 IEC Lock® Connector to UK 5A Fused Plug H05VV-F Lead

- PC980W C13 IEC Lock® to UK 5A Fused Plug 3 x 1.00mm 2.0m - Black

C13 IEC Lock® Rewirable LSZH Connector

- PA130100BK C13 IEC Lock® Rewireable LSZH Connector

C19 IEC Lock® Connector to C20 Plug H05VV-F Leads

- PC1284W C19 IEC Lock® to C20 Plug 3 x 1.50mm 1.0m - Black
- PC1285W C19 IEC Lock® to C20 Plug 3 x 1.50mm 2.0m - Black
- PC1286W C19 IEC Lock® to C20 Plug 3 x 1.50mm 3.0m - Black
- PC1293W C19 IEC Lock® to C20 Plug 3 x 1.50mm 2.0m - Orange
- PC1361W C19 IEC Lock® to C20 Plug 3 x 1.50mm 1.0m - Orange
- PC1375W C19 IEC Lock® to C20 Plug 3 x 1.50mm 3.0m - Orange

C19 IEC Lock® Connector to Free End H05VV-F Lead

- PC1174W C19 IEC Lock® to Free End 3 x 1.50mm 2.0m - Black
- PC1175W C19 IEC Lock® to Free End 3 x 1.50mm 3.0m - Black

C19 IEC Lock® Connector to UK 13A Fused Plug H05VV-F Lead

- PC1214W C19 IEC Lock® to UK 13A Fused Plug 3 x 1.50mm 2.0m - Black

m42

ESSENTIALS™

